

The

LEATHER CRAFTERS

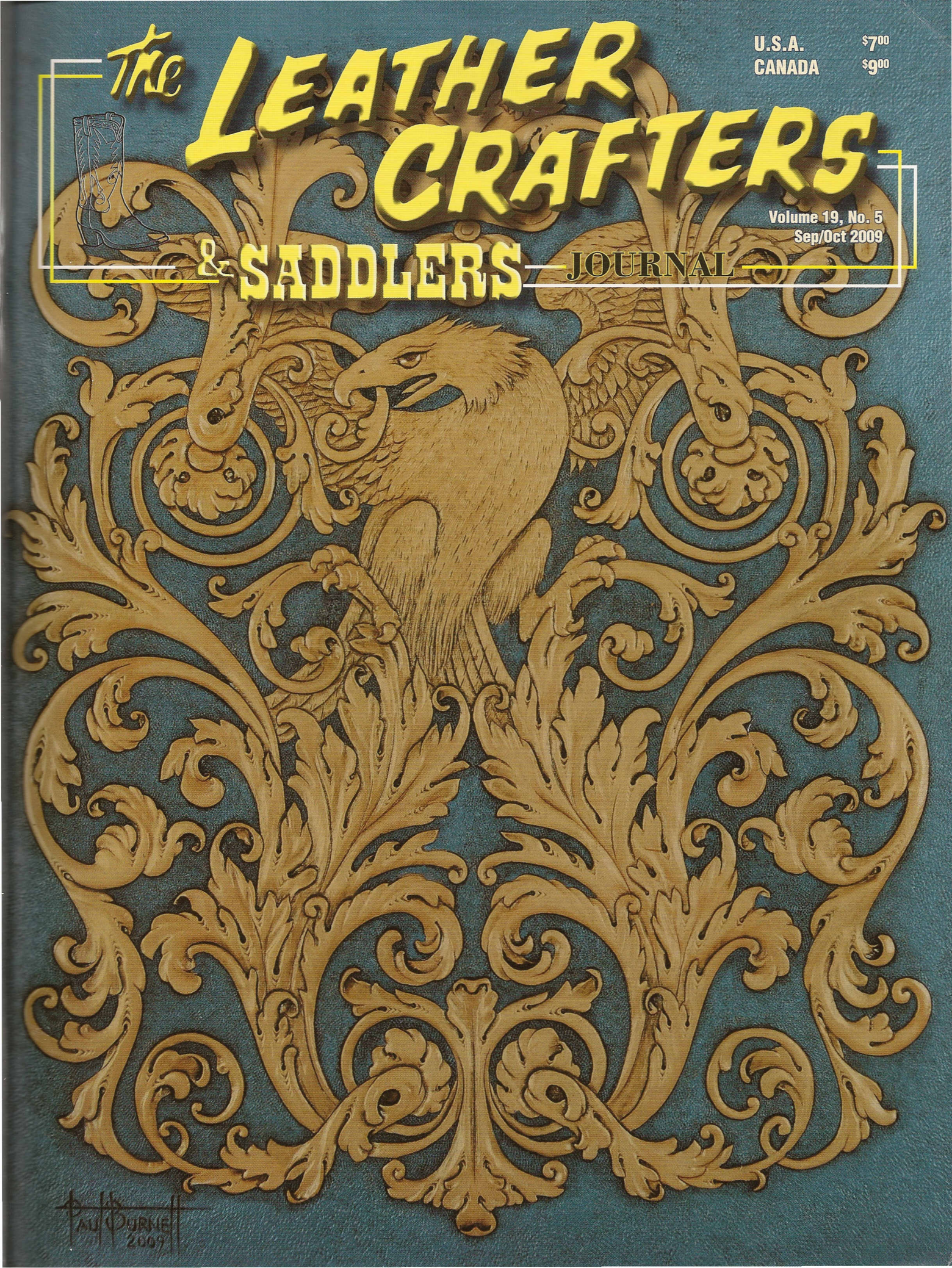
U.S.A.
CANADA

\$7⁰⁰
\$9⁰⁰



Volume 19, No. 5
Sep/Oct 2009

& SADDLERS — JOURNAL



PAUL BURNETT
2009

EDITORS/PUBLISHERS

William Reis • Dorothea Reis

Advertising • David Reis

Circulation Manager • Brian Stelzel

Subscriptions • Donna Edlund

The Leather Crafters & Saddlers Journal

The Leather Crafters & Saddlers Journal, (ISSN 1082-4480) is published bi-monthly (6 times per year). Administrative office is located at 222 Blackburn St., Rhineland, WI 54501-3777 Phone: 715/362-5393. Fax: 715/362-5391. E-Mail: journal@newnorth.net.

One year subscriptions payable in USA dollars: \$32.00 (USA); \$36.00 (Canada); \$46.00 (Other Countries). PERIODICALS POSTAGE paid at Rhineland, WI 54501, and additional mailing offices.

Address Changes must be made at least six weeks prior to the ON-SALE date. Send address changes, including old and new addresses, to 222 Blackburn St., Rhineland, WI 54501-3777. We cannot be responsible for copies which are not forwarded by the Post Office. Duplicate copies not guaranteed.

© 1996 Leather Crafters & Saddlers Journal, Inc. All rights reserved. Articles and photos are welcome and will be handled with care, but we cannot be responsible for their safety. Include name, address and phone number of author on first page of article. Text should be typed, double-spaced, on white paper. Label back of photos with identification of subject, credit line and return address. Enclose a SASE with correct postage for return of unsolicited material. Name and address of writer required on all letters to the editor. All submissions are subject to editing for clarity and length. The opinions expressed in articles and letters are those of the authors and not necessarily those of the publisher.

Deadline for articles and advertisements is six weeks before ON-SALE date. Example: July 15th is the deadline for the Sep/Oct issue.

POSTMASTER: Send address changes to:
The Leather Crafters & Saddlers Journal, 222 Blackburn St., Rhineland, WI 54501, USA

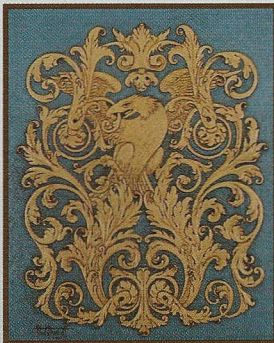
Phone 715/362-5393, Fax 715/362-5391.

E-mail: journal@newnorth.net / www.leathercraftersjournal.com

Publication Mail Agreement No. 41242024

RETURN UNDELIVERABLE CANADIAN

ADDRESSES TO: EXPRESS MESSENGER INTERNATIONAL,
PO Box 25058, London BRC, Ontario Canada N6C 6A8



ABOUT THE COVER

Paul Burnett was the first Al Stohlman Award recipient in 1983. He has authored several home study courses and many books and magazine articles throughout his 36 year career as a professional leather worker. You can learn more about his work by visiting www.paintingcow.com. He also offers free lessons at his web site and at www.leatherworker.net.

FEATURES

LEATHERCRAFT

- 6 *Building a Reproduction ANZAC Ammunition Pouch*
Dick Sherer
- 14 *Fancy Baseball Cap*
George Hurst
- 24 *Versatile Album Cover*
Cathy Schlim
- 28 *Design and Stamp Chap Yokes and Belt*
Jesse Smith
- 34 *How to Carve the Cover*
Paul Burnett
- 48 *Building Laptop-Diplomat Case*
Dick Sherer
- 56 *"Tooling" Down Memory Lane - Craftool Tech Tip #2 - Modelers*
Al Stohlman - Reprinted from
"The Craftsman" - May/Jun 1966
- 60 *How to Make a Custom Cell Phone Holder*
Antonio Gualtieri
- 66 *"Turnbacks"*
Paul Burnett
- 79 *Swivel Knife Finesse*
Paul Burnett



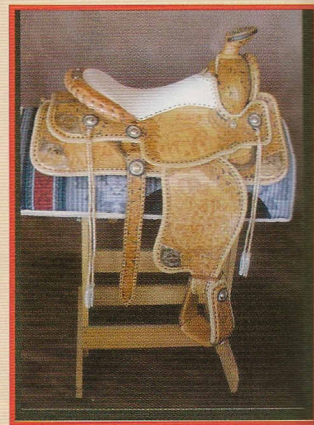
Page 6



Page 60

SADDLERY

- 10 *Saddle Gallery: Part 2 of 2*
George Chournos *Saddle Portrait Patterns - Tribute to Shepherding in the High Country*
- 17 *Wrapping the Saddle Horn - Mule Hide - Latigo Strap - Latigo Wing*
Bob Klenda



Page 10

TIPS

- 27 *Bench Notes - Modified Awl*
Dusty Johnson
- 58 *Profits from the Scrap Bin - Padding a Breast Collar*
Dick Sherer
- 74 *Sherer's Pointer # 31 - Add a Retaining Bar to your Splitter*

HOW TO MAKE A CUSTOM CELL PHONE HOLDER

by Antonio Gualtieri

Introduction:

I wanted to make a cell phone holder that:

- Had a flap to make sure the phone did not come out.
- Had a flap that went from the front to the back so I was not closing in on the phone.
- Had a flap that was easy to open and close without putting pressure on the phone – no snaps.
- Did not have an opening in the front – I wanted protection for the phone.
- Fit my phone and
- Was designed so I could use the design to make gifts to fit any type of phone.

See the architectural drawing in the **Pattern Pull Out**. The sizes were based on my phone which measured 4 ¼" high, 1 ¾" wide and ¾" deep.

Options / Considerations:

The following are some options you have in making your custom holder:

The gusset could be 1 ½" or 1 ¾" instead of the 1 ¼" I used. This will make the holder a little deeper – the one I made works just fine for my phone, but you may want it to be a little deeper for a future phone. If you do, increase the overall length by increasing the size of the area between the gouges for the folds/depth in the holder. For 1 ½" increase it by ¼" and for 1 ¾" increase it by ½".



You could make the holder taller in case you get another phone. To do this, increase the end flap to over 3" or increase the area where the gusset goes. For example, make it 2 ½" instead of 2 ¼". You could also do both. If you do this, either increase the gusset size or leave it as it is and increase the open space at the bottom. If you leave the gusset at 2 ¼" place/lace the gusset at the top.

The gusset could be 2" instead of 2 1/4" to increase the open space at the bottom of the holder. If you do, be sure to place/lace the gusset at the top to the holder and keep the space at the bottom.

You could cut out a small area in the front of the holder for the screen to show based on the size of your phone screen size. You can saddle stitch a thick, soft piece of plastic to protect the phone.

For a holster type belt-clip Tandy has some good ones – they will hold onto the belt extremely well. However, if you cut a small slit into the back where the V is so part of the V goes into the leather, it will also stay on your belt. (I did not use one for my holder; but I wish I had.)

If you make the holder for a lady with a purse, then instead of a belt-clip, attach/lace a 1/2" or 3/4" strip of leather across the back. She can then slip the strap of her purse through it and hang the holder from there. For less flapping around, attach two (2) of them, one where gusset starts and one where it ends.

Depending on your phone, you can also use these same design techniques to make a holder that runs horizontally rather than vertically. In this case, modify a belt clip if it is too long or place two strips of leather at each end and slip your belt trough them.



GEORGE BARTA HIDE CO.

888 Lakevi le Road
Petaluma CA 94952

hair on calf & cow hides
deer & elk leathers
(most colors)
veg tanned leathers
furs • exotics
latigo
garment and many
misc. leathers
raw hide
wet salted cattle,
sheep, goat & deer hides
scrap leather
quantity discounts
available



(707) 762-2965

Fax. (707) 762 7013

On Special ~

About 500 to 1 000 pounds of
cow split/suede scrap. Average
3-5 square foot pieces
(Some with footage marked)

\$2.25 per pound

For more information circle 43

LACE MASTER

CUTTING CIRCLES AROUND THE REST™
Saddlers • Braiders • Crafters



Left/Right Use
Best Yield
Fast
Compact

Beveling
30° or 45°
or Crowned

Patent No.
US 7,225,647, B2

BRAIDING
TOOLS
REFERENCE
BOOKS
BRAIDING
KITS
SUPPLIES

*Allows the braider or crafter to be more
productive. You will be amazed at how
easily and quickly you can produce
high-quality lace or string.*

Steve Derricott

Twister D Products
Gfeller Casemakers, Inc.
301 E. Bower Ave.
Meridian, ID 83642

Tel: 208-884-3766

Fax: 208-884-3767

www.lacemaster.com
sd@gfeller.us

For more information circle 278

E.C. LEATHER, INC.



CALL US TODAY
FOR ALL YOUR SADDLERY
AND WESTERN LEATHER NEEDS

TOLL FREE:
1-888-207-3305

- ✪ SKIRTING
- ✪ SEATING SUEDE
- ✪ LATIGO ✪ RAWHIDE
- ✪ VEGETABLE SIDES &
DOUBLE SHOULDERS
- ✪ OILTANS ✪ CHAP LEATHERS

1924 East 6TH ST. Office: 1-918-583-0292
Tulsa, OK 74104 Fax: 1-918-583-0337



For more information circle 174

Directions:

1. Measure your phone.

The one I used for this example was 4 ¼" in height, 1 ¾" wide and ¾" deep. I transferred the measurements to a light non-corrugated piece of cardboard and cut out a template as shown at the end of this article. Then I used the cardboard template to test against the phone and then marked the leather for cutting.

2. Calculate the overall holder length needed:
 - a. 2 X Height
(1 for the front and 1 for the back.)
 - b. + Depth (for the bottom)
 - c. + 1 ¼" for the Flap
3. Calculate the overall holder width needed:
 - a. Width
 - b. + ½" (¼" for lacing on each side)
4. Calculate the overall gusset width needed:
 - a. Depth
 - b. + ½" (¼" for lacing on each side)
5. Calculate the overall gusset length needed or wanted:
 - a. Height of Phone
 - b. - ¼" for lacing
 - c. Minus ½" for bottom opening.
 - d. Minus 1 ¼ for back flap.
6. Cut the holder and gusset from ¾ ounce leather
7. Punch lacing holes or slits in the holder
8. Punch lacing holes or slits in the gusset. Be careful to position the gusset so the holes line up and you don't punch a hole or slit half on and half off the gusset. After punching one hole I tied the two together to keep them from slipping.
9. Cut slit in back for belt clip and a hole for rivet to hold it in place.



10. Select your pattern and tool the holder and the gusset.

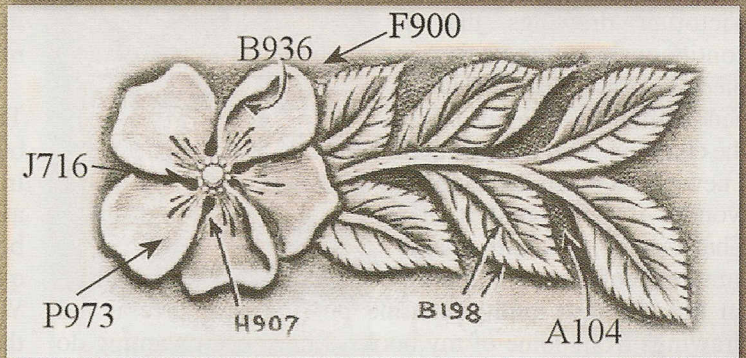
11. Apply finish.

12. Once dry place belt clip in place and set rivet.

13. Glue the Velcro in place on the back and the inside of the flap. Punch holes or slits into Velcro that it covered up.

14. You will need 15 feet of lace – or measure the perimeter and multiply by 8. Lace the cell phone holder being sure to go through the sharp turns twice.

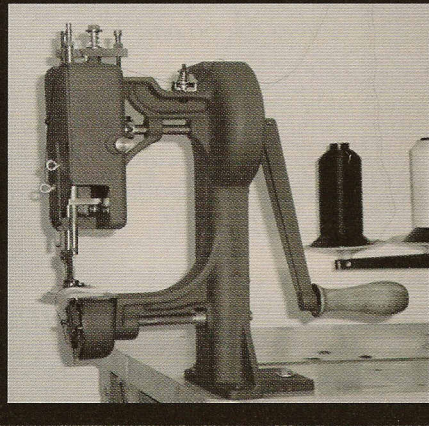
15. Start using it. ↑



Tools Used:

B198	P234	H907	J716
B936	P973	A104	F900

New! Made in the USA
Classic Cub
 Manual Stitcher
 6" throat just \$1,195



The tough full rotary hand crank machine that gives you a continuous lockstitch & True Square Feed for tight, consistent, precision stitches. Jumpfoot, Needlefeed with 1" of lift, sews up to 3/4" thickness

Luberto Manufacturing Inc
 PO Box 3011, Troy MT 59935
 1-800-419-9898

For more information circle 141

WE ARE ONLY
 A YEARLING
 IN THE
 INDUSTRY.



AND WE ARE
 ALREADY
 WINNING
 RACES!

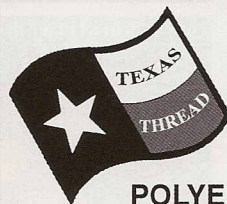
• HARNESS
 • STRAP • RAWHIDE

• SKIRTING
 • LATIGO

177 N. Wenzel Ave.
 Louisville, KY 40206
 502.315.0315 fax: 502.584.4374

QUALITY TANNED LEATHER FROM PREMIUM U.S. STEERS

For more information circle 54



TEXAS THREAD mfg. co.

manufacturers of quality sewing thread

POLYESTER, NYLON & POLYPROPYLENE
 FILAMENT THREADS & PRE-WOUND BOBBINS

Bonded & Soft, Anti-wicking, U/V resistant finish on Polyester
 Sizes 46 to 554 & Monocords Military Specifications
 White, Colors and Solution dyed Black

Fast Service and No Minimum Order



2222 Wilson Rd., Harlingen, TX 78550 1-800-840-3670 Fax 956-412-5601

For more information circle 161